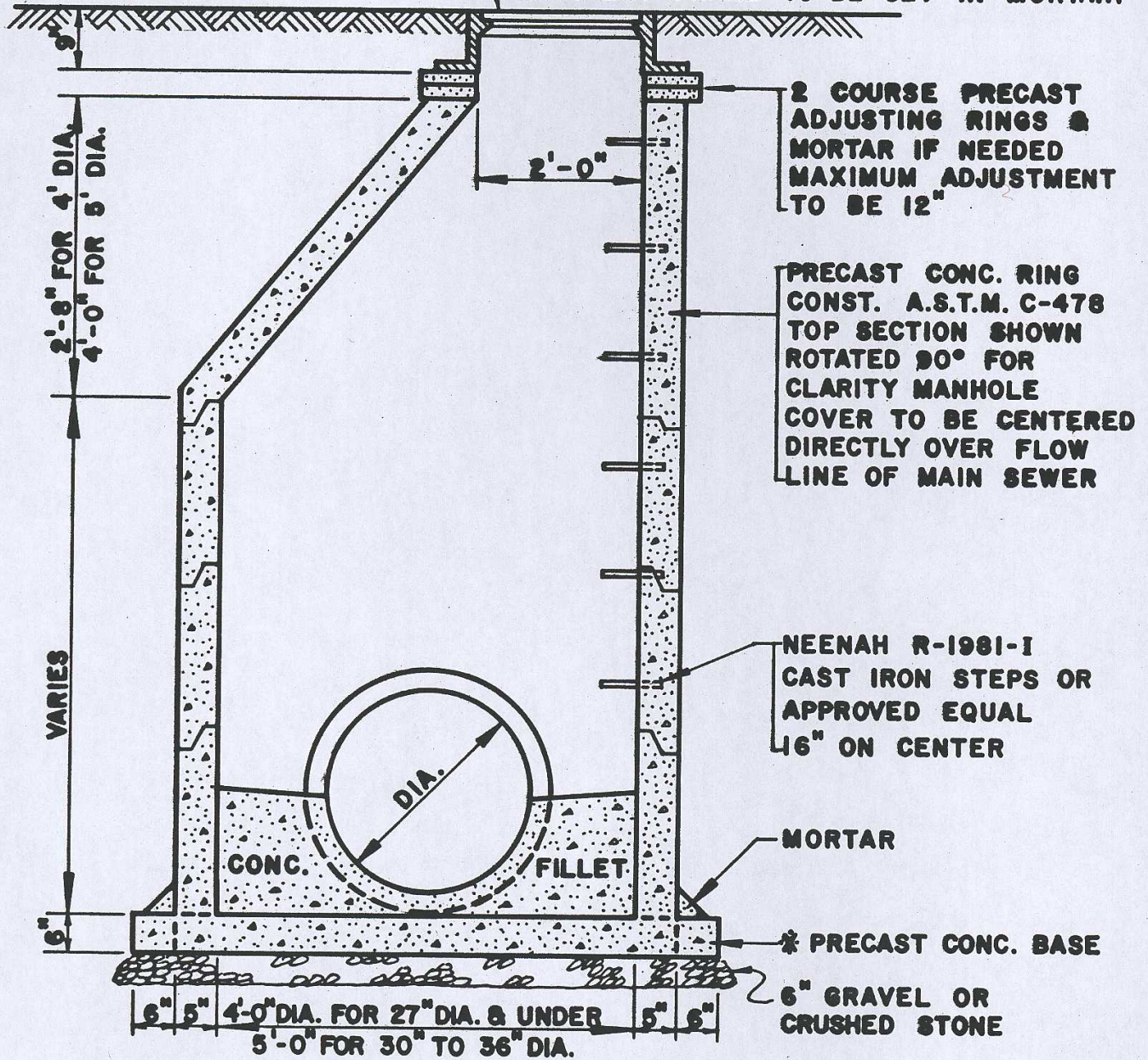


STANDARD MANHOLE FOR SEWERS 36" DIA. & SMALLER

* NEENAH R-1015 FRAME & COVER IN TRAFFIC AREAS AND NEENAH R-1077-B IN NON TRAFFIC AREAS OR APPROVED EQUALS. "SANITARY SEWER" OR "STORM SEWER" CAST INTO LID. FRAME TO BE SET IN MORTAR.



NOTES :

1. WHEN FINISHED GRADE ELEV. PROHIBITS USE OF CONE, INSTALL FLAT SLAB TOP CONFORMING TO ILL. DIV. OF HIGHWAYS STD. 2354.
2. PIPE OPENINGS TO BE CAST INTO WALL.
3. * IT IS PREFERRED THAT PRECAST CONC. BASE BE CAST INTEGRAL WITH LOWEST WALL SECTION.
4. PRECAST SECTIONS TO BE JOINED WITH TONGUE AND GROOVE JOINTS WITH RUBBER RING GASKET.