

# Village of Palatine

NEWSLETTER

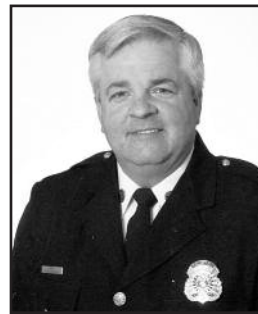
MAY 2009

In this issue:  
Palatine welcomes  
new businesses, page 2  
Vehicle stickers, page 3  
Planning a garage sale? page 4  
AT&T U-Verse is coming, page 5  
Recycle that paint! page 7  
Overnight on-street parking, page 9

## Fire Chief Norm Malcolm Retires Following Three Decades of Service to Palatine

There were only 14 sworn firefighters and one fire station in Palatine when Norm Malcolm joined the Department in 1975. Those firefighters responded to an average of 750 calls a year.

Malcolm was promoted to the rank of Lieutenant in 1980. Four years later he was promoted to the rank of Captain in charge of a shift of 16 firefighters operating out of three stations. With the retirement of Deputy Chief John Wentz, Malcolm was promoted to the rank of Deputy Chief in 1998. He was appointed Fire Chief on May 03, 1999.



The Palatine Fire Department now includes 95 full time sworn members staffing five fire stations and respond to an average of 7,250 emergency calls per year. Among Chief Malcolm's most notable accomplishments are the building of two new fire stations, and the decision to relocate the station on Dundee Road to Quentin and Echo roads in order to greatly improve response times to the northwest quadrant of the Village. Chief Malcolm was also responsible for negotiating automatic aid agreements with the Arlington Heights, Lake Zurich, Long Grove, Palatine Rural and Rolling Meadows fire departments to provide Palatine residents with the most efficient fire and EMS services available.

Robert Falardeau will become Palatine Fire Chief on June 2, 2009, following Chief Malcolm's retirement.

## Newly Elected Officials: Residents Elect Mayor, Clerk, and Three Council Members



Palatine residents went to the polls on April 7 and elected two new officials: Jim Schwantz as Mayor (far left) and Aaron Del Mar second from left) as District 1 Councilman.

Congratulations also go to District 4 Councilman Greg Solberg (center), District 6 Councilman Brad Helms (far right), and Village Clerk Marg Duer (bottom right) who were re-elected for four year terms.



## Upcoming Events

**MAY-OCTOBER FARMERS MARKET**  
see page 5

**CLEAN UP WEEK**  
May 15-20; See page 3

**PALATINE HISTORICAL SOCIETY CEMETERY WALK**  
May 17; See page 9

**MEMORIAL DAY CEREMONY**  
May 25; See page 3

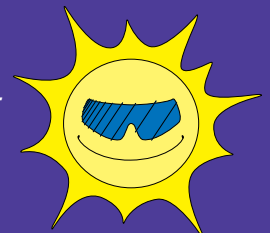
**JUNE DOCUMENT DESTRUCTION EVENT**  
June 6; See page 4

**GREEKFEST**  
June 26, 27, 28

**JULY 4TH of July FESTIVAL -**  
Carnival - July 1 to July 5  
Fireworks - Friday, July 3  
Parade - Saturday, July 4

**HOMETOWN PRIDE AWARDS**  
see page 3

**AUGUST STREETFEST**  
August  
28, 29, 30



# Thirty-One New Businesses Open in Palatine

## Palatine Welcomes a Variety of Businesses To Our Community



The Village would like to welcome the following new businesses to Palatine. Please note that the businesses listed obtained a Village business license between January 1st and March 31st of this year. The list does not include home occupations or existing businesses that changed their ownership or address.

### Retail Stores/Services

**Games and Things Chicago Inc**  
1296 E. Dundee Rd.  
(Furniture)

**La Coneccion Chicago LLC**  
533 E. Dundee Rd.  
(Cell Phone Store)

**Muebleria Tercero**  
1204 E. Dundee Rd.  
(Furniture Store)

**Manzanos Jewelry**  
1220 E. Dundee Rd.  
(Jewelry Store/Gifts)

**Indo Pak Spices**  
775 N. Quentin Rd.  
(Grocery Store)

**Fireplace Direct LLC**  
555 S. Vermont St. #2  
(Fireplace Sales)

**The Flooring Gallery**  
623 S. Vermont St.  
(Warehouse/Carpet)

**DP Inline Hockey Pro Shop**  
647 S. Consumers Ave.  
(Hockey Equip/Rental)

### Printing/Publishing

**Allegra Print & Imaging**  
510 E. Northwest Hwy.  
(Printing)

**Hennessy Comm LLC**  
800 E. Northwest Hwy. 111  
(Publishing)

**1105 Media**  
800 E. Northwest Hwy. 306  
(Publishing)

### Restaurants/Delis

**Agio**  
64 S. Northwest Hwy.  
(Italian Restaurant)

**Slice of Chicago**  
62 S. Northwest Hwy.  
(Italian Carryout)

**Jasons Deli**  
1417 N. Rand Rd.  
(Sandwiches/Deli)

**Lal Quila**  
2371 N. Hicks Rd.  
(Indian/Pakistan Cuisine)

### Services/ Service Providers

**All Battery World Inc**  
544 W. Colfax St., Suite #1  
(Batteries/Reconditioning)

**JM Realty LLC**  
425 S. Creekside Dr.  
(Property Mgmt/Realtor)

**Woodmark Technologies Inc**  
109 W. Slade St. #1  
(Software Development)

**Pureline Treatment Systems**  
707 S. Vermont St.  
(Water/Chlorine/Assembly)

**Jade Apparel LTD**  
345 N. Quentin Rd.,  
Suite #302  
(Mfg Rep)

### Finance/Investments/ Tax Service

**E-Z Income Tax**  
1180 E. Dundee Rd.  
(Travel Agency/Tax Return)

**P&L Investments LLC**  
1010 N. Sterling Ave. Suite  
#203  
(Accounting/Sales/Mgmt)

**Jackson Hewitt Tax Service**  
309 S. Rohlwing Rd.  
(Tax Service)

**Crown Financial Solutions LLC**  
309 S. Rohlwing Rd.  
(Financial Service)

**The Money Market**  
1918 N. Rand Rd.  
(Consumer Lending)

### Contractors

**J.G. Contracting Co. Inc.**  
1282 W. Northwest Hwy.  
(Contractor)

**RB Vetco LLC**  
1282 W. Northwest Hwy.  
(Contractor)

**Dailey Electric Co. Inc.**  
702 S. Vermont St. B  
(Electrical Contractor)

**M&K Construction**  
630 N. North Ct., Suite #103  
(Masonry Contractor)

### Home Goods & Services

**Sandys Lawn & Tree Care**  
2017 N. Rand Rd. B  
(Lawn/Tree Care)

**Johns Cleaners**  
5 E. Northwest Hwy.  
(Laundry)



## Playing in Flooded Streets, Creeks and Ponds: Fun . . . or a Safety Hazard?

Remember when playing in the rain was fun? When walking along the creek or a flooded pond could be an adventure?

Although there is something special about splashing around in water, it can and does pose both a health and safety risk. Rushing water in a creek, which may seem innocent enough, can quickly turn dangerous if someone falls in. Due to the force of the water, getting back out may be difficult, if not impossible.

Similarly, walking through deep water, whether in a flooded street or pond, carries with it the possibility of manhole or inlet covers being blown off. Someone walking by could easily fall or be "sucked" in.

Although storm runoff water may seem clean, invariably it carries with it chemicals from lawns, dirt and debris from streets and sidewalks, as well as animal waste. Accordingly, extreme care should be taken whenever you or your children are in or around flood waters, especially if you are not familiar with the area.



## Have an Eye-Catching Entryway? Be Sure to Enter It in Hometown Pride Award's New 'Doors of Palatine' Category

Spring is here and your green thumb is itching to go to work, or maybe your neighbor's is! The Village of Palatine Beautification Committee will be looking forward to acknowledging your efforts. The annual Hometown Pride Awards will be coming up before you know it!

Residents are invited to nominate any property – your own, a neighbor's, or a business whose curb appeal/landscaping is a real asset to the appearance of the community. And this year there is a new category arriving, the "Doors of Palatine." This new category will acknowledge specifically front entrances of residential buildings. This includes the front entrance way and its plantings, statuary, pots, etc.

Look for more information and the nomination form in the July Village Newsletter! Take Hometown Pride in Palatine!



## It's Palatine Spring Clean Up Week May 15-20

### Garbage and Refuse May Be Placed at the Curb Early

It's that time again for spring cleaning, and the Village is doing its part to make the job as easy as possible.

The week of May 15-20, 2009 has been designated as our annual Spring Clean Up Week. During this time garbage bags and other refuse items may be placed at the curb in advance of your collection day throughout the weekend without violating Village ordinance. Refuse will be collected only on your regular collection day.

All refuse items placed at the curb must be prepared according to standard specifications. Items restricted from Clean Up Week include appliances, tires, paints, household chemical waste and bulk items exceeding 60 pounds. Construction debris must be properly bundled and is limited to a maximum volume of two cubic yards.

For more information please call the Environmental Health Division at (847) 359-9090 or visit [www.palatine.il.us](http://www.palatine.il.us).



## Memorial Day Parade Steps Off at 10:15 AM on May 25

The Memorial Day Parade, organized by members of the American Legion, is set for Monday, May 25. The day's events will begin at 9:45 a.m. with placement of flags and a prayer at veterans' graves at Hillside Cemetery on Smith Street.

The parade will step off at 10:15 a.m. from Cornell Avenue and Smith Street, then proceed north on Smith, east on Robertson, south on Brockway Street, then turn east on Wood Street to the Veterans Memorial in Community Park.

The ceremony at the Veterans Memorial will include a keynote speech by Jerry Handlon, Silent Warrior from the pre-Vietnam era, at 11:00 a.m., as well as a rifle salute, presentation by the Palatine American Legion Color Guard, speeches by elected officials and dignitaries, and the Palatine High School marching band.

For further information, call the Palatine American Legion at (847) 359-1606.

## Vehicle Stickers Must be Displayed by June 30

If you live within the corporate limits of the Village of Palatine, you must display your 2009-10 Village vehicle sticker by June 30. Stickers may be purchased at the Community Center, 200 E. Wood Street, beginning in May.

The vehicle stickers are valid from July 1, 2009 through June 30, 2010. The price for passenger car stickers, if purchased during the months of May and June, is \$25.00. Stickers purchased on July 1 and after are \$45.00 per passenger vehicle.

One vehicle sticker per person is available at the reduced rate of \$5.00 if the driver qualifies as a disabled veteran (proof by vehicle registration), holder of handicapped license plates issued by the State of Illinois, (proof by authorization from the Secretary of State of Illinois) or as a senior, 65 years or older. There is only one reduced rate vehicle sticker per household.

The Village of Palatine office hours are:

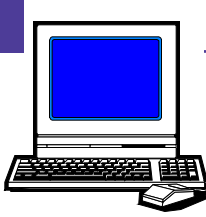
Monday-Friday 8:00 a.m. – 5:00 p.m.  
Saturdays (only in June) 8:30 a.m. – 12:00 p.m.

## And Don't Forget Fido and Fluffy!

Animal tags also need to be purchased by July 1 at a cost of \$6.00 per animal. A current rabies vaccination number is required for purchase.

# Home Pickup Service Available for Computers and Other Electronics

The Solid Waste Agency of Northern Cook County (SWANCC) will once again offer residents a convenient way to recycle old computers and electronics beginning May 2009. According to the U.S. Environmental Protection Agency, it is estimated that billions of consumer electronics will be scrapped during the rest of this decade. Because there are both potentially harmful and recoverable materials in computers and electronic equipment, recycling old equipment is the responsible thing to do. The At Home Computer Pick Up Program offers the option of having these items picked up from your front door rather than driving to a drop off location.



SWANCC's At Home Pick-up is as easy as 1, 2, 3!

**Step 1** – Schedule a pick-up by contacting SWANCC at (847) 724-9205 from 9:00 a.m. to 4:00 p.m., Monday through Friday.

**Step 2** – Place electronics and computer equipment without packaging on the front porch or steps by 7:30 a.m. on the scheduled day of pick-up.

**Step 3** – Tag equipment with signage provided by SWANCC.

The program is available to single family and town home residences with front door access. Residents will pay a fee of \$25.00 via credit card to offset program costs and can recycle up to 6 items per pick-up. See the list of acceptable items below. No individual item can exceed 50 pounds. Cell phones and calculators do not count as an "item." For program questions, please e-mail [athome@swancc.org](mailto:athome@swancc.org).

#### Acceptable Materials:

- Personal computer systems • monitors • printers • scanners • fax machines • electric typewriters • telephone/answering machines • shredders • postage machine • TVs (max 27" - no wood consoles) • VHS/DVD players • radios • stereo equipment • microwaves
- cell phones • calculators

#### Unacceptable Materials:

- TV's over 27" or wood consoles • air conditioners • copy machines • humidifiers
- large or small home appliances • power tools • software • disks • CDs or DVDs

Through reuse and recycling programs, these materials can be refurbished for reuse or demanufactured for recycling. By not putting your electronics in the trash, natural resources and energy are conserved, valuable and potentially harmful materials are recovered and landfill space is saved.

For many other options regarding permanent drop-off locations, donation and mail in electronic and computer recycling programs, visit [www.swancc.org](http://www.swancc.org) or contact the Environmental Health Division at (847) 359-9090. Palatine Environmental Health Division at (847) 359-9090.

## Protect Yourself from Identity Theft: Come to Free Document Destruction Event on June 6

Prevent identity theft while cleaning out your files.

The Village of Palatine and the Solid Waste Agency of Northern Cook County (SWANCC) will be hosting a free document destruction event on Saturday, June 6, 2009 from 9:00 - 11:00 a.m. The event will be held at the Palatine Public Works facility located at 148 W. Illinois Avenue.

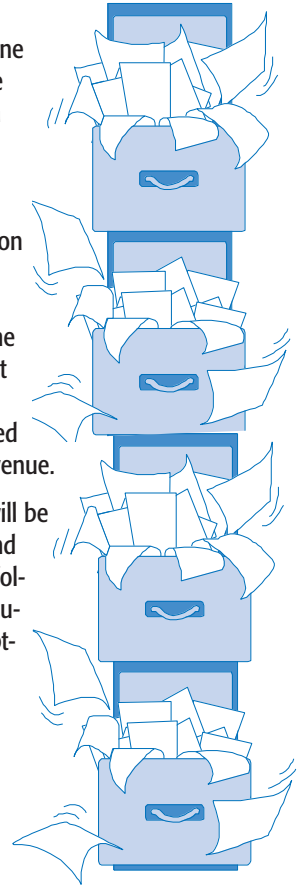
Paper documents will be shredded on site and then recycled. The following types of documents will be accepted for shredding:

- bank statements
- medical forms
- personal files
- retired tax forms
- receipts

Staples and paper clips do not need to be removed, but please remove binders.

This event is open to residents that live in SWANCC-member towns only, including the Village of Palatine. Proof of residency will be required. No business waste will be accepted.

For more information, please call the Environmental Health Division at (847) 359-9090 or visit [www.palatine.il.us](http://www.palatine.il.us) and SWANCC at (847) 724-9205 or visit [www.swancc.org](http://www.swancc.org).



## Planning a Garage Sale?

If the discards you've discovered while spring cleaning your closets, basement and garage have you thinking about turning them into cash with a garage sale, here's some important information for you:

- Garage sales may last no longer than 12 hours per day for a maximum of three consecutive days.
- The Village limits each resident to no more than three garage sales per year.
- Signs advertising the garage sale may be posted on the day of the event only.
- Garage sales do not require a permit.



## AT&T U-VERSE COMING TO PALATINE

**A**T&T U-Verse Service, an Internet protocol-based video service that integrates digital TV, high-speed internet and digital voice service delivered over a fiber network is, coming to Palatine neighborhoods. Last month, the Village issued 7 permits for the installation of AT&T Video Ready Access Devices (VRAD) boxes. AT&T estimates a total of 80 VRAD boxes will be installed throughout the Village during the next 3 years. Village officials will be reviewing all locations with AT&T representatives prior to the issuance of any permits.



AT&T U-verse TV will provide residents of Palatine an alternative video service option to Comcast and the current Satellite providers, by providing similar programming choices, including Public, Education, and Government Channels.

## Palatine Farmers' Market Is Now Open for the Season

**I**t's May, and the Palatine Farmers' Market is in full swing every Saturday morning at the train station, Smith and Wood Streets. In May we have the early fruits of the soil: strawberries, asparagus, rhubarb, mushrooms, lettuce, hanging baskets, potted herbs, with new produce added each week, as it comes in season.

As always at the Palatine Market, the produce is grown, harvested, brought direct from the farm, and sold by the farmer. Jordan is back from Wisconsin, Mike is returning from his Michigan orchards, and the Indiana Boys are back, now with 50% organic, in response to customer request. New at the Market is sustainable farmer Peter Grubbe bringing organic produce from his Illinois farm just down the road.

In response to a noted shortage of sweets at the Market, we're welcoming Nick Addante of High Rise Bakery and caterer David Esau with specialty breads, French bread, baked goods, and fruit pies. Pauline Gruber offers her private recipe cookies and sweets, and Chef Lisa Bellan of Feast of Eden delights with a variety of her signature cheese cakes. There are now sweets enough for all!

In addition to produce and baked goods, you've come to expect the world's best spices from Pierre's La Spiceria, olives from Jean Pierre, and tea from Cathy's Tea Treasury. Pasta Sue is back with a variety of home-made pasta, soups, sauces, and cheese crisps. Joanne and Ken have even more varieties of nuts, sweet, spicy, and plain. Ron Lester, direct from his buffalo ranch, has bison steaks, and has branched out with cheese, beef, chicken, and shell fish.

Key to each season are Barb's Maggies Munchies, home-made pet treats for our loyal 4-legged friends; Diane and Courtney's Journey to Greendome soap, cleaners, lip balm, bug repellent, all environmentally friendly. They can tell you all about it: they make it. "That Pickle Guy" is back with fresh pickles, muffalata, and giardiniera.

Non-edible, but a feast for the eyes are Kristine's artistic gourds, which she grows herself, dries and designs are popular, as are Gill's pottery pieces, happy items as are her mother's watercolor cards. Kathy Horn is showcasing new varieties of colorful cut flowers with a special container of blooms for children to select a free flower—encouraging their love of flowers.

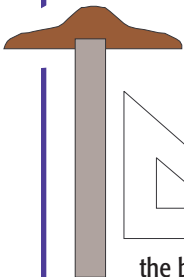
With all there is to see and taste at the Market, there are also very talented local street musicians performing each week, with a special emphasis on Irish heritage on May 30 with a performance by the McNulty Irish Dancers at 10:00, and traditional Irish music performed by Palatine's own Mike O'Regan and Karen Reshkin.

The Market season is filled with a variety of weekly special events from bike safety offered by Mike's Bike Shop, to free hearing screenings from the Lions Club, from pet health and training from Young at Heart Pet Rescue, to bird identification and care from the Audubon society. For a complete listing, come to the Market. Calendars are available. Palatine Farmers' Market is open every Saturday (except July 4) from 7:00 a.m. to 1:00 p.m. at the train station.



## Thinking about a deck, fence, or room addition? Check First to See if a Building Permit is Required

If you are planning a residential project that involves structural changes to your home, such as building a deck, enclosing a deck, bedroom addition, or adding a stair, you will need a building permit. But other projects may require a permit, too.

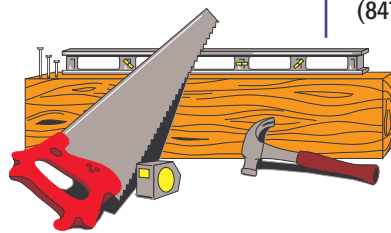


The Village of Palatine requires permits for indoor or outdoor structural work, freestanding structures (such as a fence, shed, or pool), or major changes to the living area of a home. The permit process ensures that minimum safety standards are met and that construction meets local building and zoning requirements. Make sure you understand

the building codes and local ordinances before proceeding with a major improvement project. All commercial work requires a permit.

### YES, you need a building permit for the following residential projects:

- Installing paver sidewalks, driveways, patios, etc
- Building a deck or shed
- Most demolitions
- Adding a fireplace
- Adding or remodeling rooms (i.e. kitchen, bathrooms, basements, etc)
- Replacing electric appliances with a gas model or vice versa
- Adding or altering the electrical or plumbing systems
- Replacing or adding a patio, driveway or sidewalk
- Building or replacing a fence
- Replacing an air conditioning, heating unit or water heater
- Installing a pool or hot tub
- Lawn sprinklers
- Sewer repairs



### NO, you do not usually need a building permit for the following residential projects:

- Painting exterior or interior walls
- Replacing a window or door within the same frame
- Installing new flooring
- Replacing a faucet or plumbing valve



If you are still uncertain as to your need for obtaining a building permit, call the Building and Inspection Services Division at 847-359-9042. Ask to speak with the Permit Control Coordinator.

### WHAT ARE EXPRESS PERMITS?

For small residential projects such as fences, decks, sheds, driveways and other similar projects, express permits are available at a set price. Express permits require less information than full permits and our goal is to have them processed in 3 business days. Visit the Building and Inspection Services website at <http://www.palatine.il.us/permits/index.htm> or call (847)359-9042 for more information.

### STANDARD BUILDING PERMITS

Please refer to the "Obtaining a Residential Building Permit: Submittal Requirements" or "Commercial and Multi-family Building Permit Submittal Requirements" forms for required information for your projects. Both of these forms are available on the web at <http://www.palatine.il.us/permits/index.htm>

### PRE-SUBMITTAL MEETING

When all of the required information is gathered and the permit application is completed, contact the Permit Control Coordinator at (847) 359-9042 to set up the required pre-submittal meeting. All information must be provided before a permit submittal will be accepted.

### PERMIT COSTS

Permit fees vary with the type, size and complexity of the project. They are determined using a number of factors that vary from project to project. As a rough guide, fees have ranged anywhere from 1% - 3% of the construction cost.

## Know Where There is a Tree Limb Overhanging a Sidewalk? Call Us and We'll Remove It



In response to resident complaints, the Village Council has approved a program designed to inspect and remove any tree limbs or bushes that may hinder the safe passage of pedestrians along Village sidewalks.

This program, which will take place this summer, will identify and remove these obstructions, whether on public right-of-way or private property, at no cost to the abutting property owner.

Residents are encouraged to check their trees and to remove any low lying limbs or branches which infringe within a seven foot vertical height above the sidewalk. Residents are also encouraged to trim back any bushes or shrubs which overhang the sidewalk.

As always, if you see a low lying branch or a bush which overhangs the sidewalk, please call the Public Works Department at (847) 705-5200 and report its location. Village crews will remove these obstructions as part of their normal trimming efforts.

## Quick Tips for Disposing of Latex Paint: Recycle, Give it Away, Store It for Future Use

**N**eed to dispose of cans of unused paint that is gathering dust in a corner of your garage? Cans of latex paint in a liquid state or other household chemical wastes can not be placed in the household trash for disposal. Furthermore, latex paint is not accepted at household chemical waste collections. The following are some options for recycling, disposal, and reuse of latex paint:

### Recycle Paint Locally

Be environmentally responsible by taking advantage of these local resources for recycling latex paint. Please note that paint is accepted for drop off only during business hours.

#### Zimmer Hardware

16 N. Brockway Street, Palatine  
(847) 358-5400

Fee of \$1.50 per container, original containers only.

#### Ace Hardware

239 E Northwest Highway, Palatine  
(847) 358-8100

Fee of \$1.50 per quart, \$2.50 per gallon and \$8.00 per 5 gallon.



### Use an Absorbent and Dispose in Garbage

Today's latex (water-based) paint has a very low level of toxicity and if properly dried and prepared can be disposed of in the household garbage. Add an absorbent such as sawdust, shredded newspapers, kitty litter or waste paint hardener (available at most hardware stores) to your can of liquid latex paint. Depending on how full the can is, you can just add the absorbent to the can and mix it up. Let the paint dry out completely. This should be done in a well ventilated area and away from children and pets. After the paint has dried, put the can in your garbage with the lid off so the garbage hauler knows the paint is dried. Consider completely removing the dried paint and recycling the empty can.

### Keep Painting

This may sound simple, and it is. What better place to put that last pint or so of paint but right up there on the wall where it blends in perfectly with all the other paint you just put up there. Sure, it's a little extra work - but you'll be rid of that extra paint for good.

### Paint Something Else

It doesn't even have to need the paint. Use an old piece of cardboard, some scrap lumber, or the inside of your garage. Just about anywhere would probably work to use up that last bit of paint.

### Give it to Someone

Look around and you may find somebody who needs to paint a small area. Some schools or local theatres will take some small amounts of paint for scenery.

### Store it for Later

Everyone has good intentions to use half-filled paint cans for "touch-ups" that never come. Also, many people have saved paint that becomes unusable over time before it's called into action. If you do save your paint for later, follow some easy tips to make the paint last longer. Just cover the opening with plastic wrap, and make sure the lid fits securely so the paint doesn't leak. Then turn the paint can upside down! This creates a tight seal, and keeps the paint fresh to use again.

For further information, contact the Environmental Health Division at (847) 359-9090.

Source: Illinois Environmental Protection Agency – Used Paint Disposal Alternatives



## When it Comes to Putting Garbage, Yardwaste and Recycling at the Curb, Timing is Everything!

**B**e a good neighbor and avoid missed garbage collections by placing your solid waste at the curb by the required time.

Solid waste, including garbage, recycling and yard waste, must be placed at the curb for collection no later than 6:00 a.m. on your scheduled collection day. Solid waste collection by Groot starts as early as 6:30 a.m. and the routes within the neighborhoods can change during the day without notice.

Solid waste should not be placed at the curb any earlier than 7:00 p.m. the day before collection during the time of the year when daylight savings time is in effect or any earlier than 4:00 p.m. during the time of the year when central standard time is in effect.

If you have any questions regarding the Village's solid waste collection and services, please contact the Environmental Health Division at (847) 359-9090 or visit [www.palatine.il.us](http://www.palatine.il.us).

# PROTECT YOUR HOME FROM FLOODING

If your home or property has a flooding or drainage problem, there are steps that can be taken to eliminate or minimize them.

Fortunately Palatine does not suffer from repeated severe river or coastal flooding that many other communities in Illinois and other parts of the country experience, but because several creeks, Salt and Buffalo Creeks, pass through Palatine certain adjacent areas can be impacted by overbank flooding. This can cause significant damage to a home or property. The floodplain areas adjacent to these creeks have been identified. These are indicated on the FEMA Flood Insurance Rate Maps (FIRM). These maps can be viewed in the Engineering Department of Village Hall, the reference desk at the Palatine Public Library or by going on the FEMA Map Service Center web-site at <http://msc.fema.gov>. The floodplain areas on these maps are based on a design rain storm having a theoretical return frequency of 1% in a year (The 100-year rain). However rain events can exceed this amount or other conditions may cause higher flood levels. For many persons it is hard to translate the flood elevations and boundaries that are shown on a map to how it may affect your property as well as how they correspond to actual rain events in the past. If your property is within or adjacent to a flood hazard area and you would like to know to what extent it could be affected by a flood, the Village Engineering Department can help you with that. Also during the September 13, 2008 severe rain event that resulted in the most flooding in the Chicago area since 1987, actual high water levels in the creek at several locations were measured. This can help affected property owners compare what was experienced in that real rain event to what is predicted on the maps.



The Village Engineering Department can also assist residents who are having flooding problems. You can arrange for a site visit or consultation to discuss your problem by calling 847-359-9044. We can discuss and review your problem to try and determine the cause and what remedies might possibly be available. For many it may be just regrading on the property to direct the water away from the house. Over time ground will settle and landscaping and other obstructions occur that alter the original drainage patterns. The Village also has several assistance programs that a resident can partake in to correct a drainage problem. These range from storm sewer extensions, small diameter sewers and rain gardens to address yard drainage problems. There is also a Basement Protection Program for homeowners who want to upgrade their own plumbing and sewer service to prevent sanitary sewer back-ups into the basement. You can go on the Village web-site at [www.Palatine.il.us](http://www.Palatine.il.us) for more information. For those problems that may need alterations to the home itself, the Village cannot provide these services but can assist the resident in how to locate the appropriate design professional and/or contractor. The Village can also direct the homeowner to published documents regarding the type of modifications that may be needed. Many of these are available on the FEMA web-site at <http://www.fema.gov/library/index.jsp>.

## Village Council to Consider Snowplowing Sidewalks at June 8 Meeting

For the past several years, the Village Council has reviewed the Public Works Department's response to the previous winter's snow events. During this review, efforts are made to:

- Identify problems or issues that have been brought to the Village's attention;
- Develop options that can be taken to correct these matters; and
- Review services being provided along with their service levels.

This past winter, the Village has modified the snow ordinance to prohibit commercial properties from storing snow on sidewalks. The impact of this change will be reviewed along with discussion regarding mandatory snow removal from sidewalks by private property owners and/or the Village and cul-de-sac snow removal procedures.

If you have any thoughts or concerns about snow plowing and ice control, please join us at this time. If you are unable to attend and wish to comment, please forward your thoughts to Andrew Radetski, Director of Public Works, by calling the Department of Public Works, (847) 705-5200; by forwarding an email to [aradetski@palatine.il.us](mailto:aradetski@palatine.il.us) or by sending a letter to, Department of Public Works, 48 W. Illinois, Palatine, IL. 60067.

All comments are welcome.

## Planning A Block Party This Summer? We Can Help You Make It Extra Fun and Safe

Planning a neighborhood party too big for the backyard? Make it extra safe and lots of fun by obtaining a block party permit that will enable you to close off a street until as late as 11:00 pm.

Our Fire and Police Departments would be pleased to attend your event and educate the kids on good safety practices.

For further information, call the Village Manager's office at (847) 359-9050. Forms are available through the Village of Palatine website, [www.palatine.il.us](http://www.palatine.il.us) **Publications and forms; Block Party Request**; or feel free to visit us in the Administration Department to submit your request.





# Palatine News Briefs

## FREE TICKETS TO ARLINGTON PARK RACECOURSE ON MAY 16-17 FOR PALATINE APPRECIATION WEEKEND

Arlington Park invites you to Palatine Appreciation Weekend on Saturday, May 16, and Sunday, May 17. Log onto [www.arlingtonpark.com](http://www.arlingtonpark.com). Click Tickets; Click the calendar date, select the package you would like. Use "password" – PALATINE and select the "Arlington Combo Package" (Saturday ONLY) or your two FREE tickets (Saturday or Sunday). The Saturday combo package for \$16 includes free admission, Daily Racing Guide, Bistro Lunch & Grandstand Reserved Seats! Tickets will be held for pre-paid package reservations at Grandstand Will Call, (847) 385-7410. A race will be named for Palatine and the community will be honored with that day's trophy presentation following the race made by the Mayor. In addition, Palatine will be represented at the track by various local organizations such as police, fire, and local charities.

## NEED A NEW SIDEWALK?

If the sidewalk in front of your home is uneven, severely cracked, or deteriorated in a way that meets specific safety standards, the Village's replacement criteria, you can have it replaced for half the actual cost through the Village's 50/50 Sidewalk Replacement Program. The cost to the homeowner is approximately \$58.00 per sidewalk square. Requests for participation in the 50/50 Sidewalk Replacement Program can be made by calling the Department of Public Works at (847) 705-5200 between 8:00 AM and 4:00 p.m. Monday through Friday.

The Village's Hazardous Sidewalk Program is designed to identify and eliminate the worst tripping hazards, at no cost to the homeowner. The area targeted for this year is west of Hicks Road, east of Quentin Road, south of Northwest highway, and north of Illinois Avenue.

Call the Department of Public Works at (847) 705-5200 for further information about the 50/50 Sidewalk Replacement Program or the Hazardous Sidewalk Program.

## PALATINE'S HISTORY COMES ALIVE ON MAY 17

The Palatine Historical Society is hosting its popular Cemetery Walk on Sunday, May 17 from 1:00-4:00 p.m. The event will take place at the Hillside Cemetery on Smith Street just north of Colfax Street. Costumed actors will portray the lives of some of Palatine's earliest residents. It's fun, it's informative, and it's for the entire family! Tickets can be purchased at the cemetery that day: \$5.00 for adults, \$4.00 for Historical Society members, and \$2.00 for children under 16 years of age.

## NEED TO PARK A VEHICLE ON THE STREET OVERNIGHT? HERE'S WHAT YOU NEED TO KNOW

Village ordinance prohibits overnight parking on the street. But exceptions can be made for unusual circumstances such as the in-laws visiting from out of town or putting in a new driveway or resurfacing the old one. Such exceptions are limited to five days per calendar month.

Why does Palatine prohibit overnight street parking? There are some important reasons.

- It enables the Village to keep the streets free from people using the street as their personal parking lot.
- It limits the number of vehicles parking on the street at night during the winter snowplow months.
- It has provided police helpful investigative information when a ticket has been issued to a vehicle that did not receive permission to park on the street (the car may be used for criminal activity in a neighborhood).

If you need to park a vehicle on the street overnight, call the Police Department's non-emergency number, (847) 359-9000 and provide your full name, address and phone number; the location where the vehicle will be parked (if different than your address); the number of vehicles you are requesting to be parked on the street; and the license plates of each vehicle along with vehicle's make and model and the number of days you are requesting permission (remember, no more than five days during a calendar month).

## YOU CAN ADD VOLUMES TO A CHILD'S FUTURE

Turn the Page, a non-profit organization that helps fill the shelves of public schools and libraries that have little or no funding to acquire books, has a donation box in the Village Hall lobby.

Residents are encouraged to drop off new or lightly used children's books. The organization also accepts books and audio books for children and young readers published within the last six years including non-fiction, fiction, Spanish language books, reference books, and classic literature. In addition, monetary contributions are always appreciated.

Turn the Page members will also provide assistance to businesses or community groups interested in sponsoring a book drive.

For further information about making a donation, sponsoring a book drive, or to learn more about the organization, contact Turn the Page founder Krista Wodaiz at (847) 304-8122; [turnthepageinc@sbcglobal.net](mailto:turnthepageinc@sbcglobal.net); or [www.turnthepageinc.org](http://www.turnthepageinc.org)

# Emergencies Happen!

## Are You Prepared? Take This Simple Test (It could save your life)

1. Are you aware that the Village of Palatine has an emergency/disaster plan?  
 Yes  No
2. Do you know where on the AM radio dial to find the Palatine Emergency Advisory radio station?  
 Yes  No
3. Do you remember seeing or hearing any messages that encourage you to be prepared for emergency situations in Palatine?  
 Yes  No
4. Have you prepared a disaster supply kit with emergency supplies like water, food and medicine that is kept in a designated place in your home?  
 Yes  No
5. Have you prepared a small portable kit of emergency supplies that you keep in your home, car, or workplace to take with you if you have to leave quickly?  
 Yes  No
6. Do you have a specific plan for how you and your family will communicate in an emergency situation if you are separated?  
 Yes  No
7. Have you established a specific meeting place to reunite in case you and your family cannot return home or are evacuated?  
 Yes  No
8. Have you practiced what you and your family should do in an emergency at home?  
 Yes  No
9. Have you taken first aid training such as CPR/AED in the last 5 years?  
 Yes  No
10. Are you aware that the Village of Palatine offers free emergency preparedness response training?  
 Yes  No



### Test answers – no peeking!

1. The Village of Palatine's Emergency Management Agency (PEMA) is charged with taking those steps necessary to protect its residents before, during and after a disaster strikes by making certain that Palatine is as prepared as possible to mitigate, respond to, and recover from any type of natural or manmade disaster.
2. Palatine's Emergency Advisory radio station is located at 1660 on your AM dial. Tune into this frequency for weather reports, public safety information, instructions, advisories and announcements.
3. Disaster preparedness and emergency response information is available at the Palatine Emergency Management Agency website: [www.palatine-ema.org](http://www.palatine-ema.org) as well as 1660 on your AM dial.
4. You should have an emergency supply kit that includes enough water, food and medications for your family and pets for at least three days. It should also include a flashlight, first aid kit, dust masks, a solar or hand-crank radio, and a whistle to signal for help if necessary. For more information on building your kit, visit [www.ready.gov](http://www.ready.gov)
5. Your portable kit should be a smaller version of your emergency supply kit.
6. Family emergency plan templates are available at [www.ready.gov](http://www.ready.gov). These will enable you to make a plan to stay in touch if you are separated in an emergency.
7. Take a few moments to sit down with your family and decide where you will unite in the event that an emergency prevents you from returning to your home.
8. Know how to shut off the utilities in your home, and the proper use and maintenance of fire extinguishers and smoke alarms.
9. Call the Red Cross in Arlington Heights, (847) 255-0703 for information on CPR/AED training.
10. If you did not know the answers to these questions, PLEASE sign up for the FREE CERT training offered by the Village of Palatine. Community Emergency Response Team Training classes are offered on a regular basis. For more information, email [ema@Palatine.il.us](mailto:ema@Palatine.il.us).

# Preparing for Disaster: You Might Think It Won't Be That Bad . . . Until You Experience It

by Diane Logsdon, IPEM

**O**n average, 55 major disasters are declared in the US every year. In our "post-9/11" and "post-Katrina" world, you would think that the majority of Americans would be actively preparing themselves for the next disaster. However, it seems that most individuals feel that either the disaster won't occur, or if it occurs "it won't impact me." Or if the disaster impacts "me" it won't be that bad; or if the disaster is that bad the government will step in to take care of me and if it's so bad that the government can't help me then there was nothing I could have done to be prepared in the first place. The fallacy of this thinking is mind-numbing to those of us who work to plan and prepare for these disasters.

**First, disasters occur all of the time.** Most are not considered news-worthy because the overall impact of the disaster is so small compared to the news market. In other words, your disaster doesn't necessarily make the news but it impacts you greatly. And of those that are considered news-worthy, the length of time that the news pays attention is always nanoseconds compared to the duration of the impact on individuals.

**Second, it is only a matter of time before a disaster impacts each and every one of us.** Hundreds of residential fires occur every week in our country, and this single family incident may be the worst disaster a family will experience. As a child, my family happened upon a house fire before the fire department arrived. When the mother arrived, she thought her children were inside the home and in an extremely distraught state she went in to save them. The children were all out of the home at the neighbor's house and yet she risked her life because they didn't have a plan in place. The fear of arriving home to find that there has been a fire is one that is shared by many people. Arriving home to find everything you own, all of your family mementos, and everything that you have worked so hard to earn erased from existence is not a circumstance that many people would manage well. But it occurs over and over again on a daily basis, and the financial losses are well documented. In the more than 238,000 residential fire incidents in 2005, total disaster losses were more than 2.9 billion dollars.

**Third, you might think "it won't be that bad" -- until you experience it.** The loss of a family pet, injury to a family member, loss of family heirlooms or financial impact due to loss of income or repair expenses can be devastating. Preparedness is meant to ensure our physical safety, communication and reunification with family members as well as our ability to feed and shelter ourselves following the disaster. Not being able to provide for our family members is an unthinkable situation for most people and yet so often there is no attempt to be prepared to survive a disaster.

**Fourth, the government is not responsible for caring for our families.** The truth is, we alone hold the responsibility for our family. The government is responsible for providing life safety services (police, fire and emergency medical) both on a daily basis and in an emergency, but we are responsible for caring for ourselves.



**Last, preparation can help mitigate the effects of almost any disaster that might occur.** Current statistics show that for every \$1.00 spent on preparedness efforts, \$3.00 - 4.00 is saved during a disaster response. Although we hope that we won't need the preparedness, sooner or later there quite likely will be quite likely be a time when we need to be ready. Preparing your family for a disaster should be a process rather than a goal. Start by drawing a map of every floor of your home. Then identify two exit routes from each room. By considering how you would react in a residential fire, you can plan for the majority of disaster situations while taking care of the most probable incident. After identifying exits, determine where the family will meet once outside. Just as we teach kids in school fire drills, we must have a meeting place so we can conduct a "head count." After the exit routes have been identified, practice escaping from each room – especially bedrooms where evacuation may need to be conducted in the dark. Continue to practice evacuations at least every six months.

Next begin to gather items for a disaster supply kit. Have a kit for the car, a kit for the home and a kit in case you need to evacuate the area. Each kit will contain slightly different items and needs to be stored in a different area (car kit in trunk, stay kit in the basement or safe room and evacuation kit near the exit to the family automobiles). For this reason, some items will need to be in each kit. Although you may carry a first aid kit in the car at all times, it may not contain all of the items necessary such as particle masks to keep dust and debris from the nose and mouth. The federal government has information compiled regarding items to include in kits and special needs to consider when gathering the items together at their "ready" website [www.ready.gov](http://www.ready.gov).

Have a communication plan in place. Understand the plan of the schools and workplace that every family member attends in order to facilitate rapid reunification following a disaster. But don't forget to have a plan to communicate outside of the area so that family and friends can check on you. Have a single "Out-Of-Area Contact" and let everyone know that should there be a disaster, you will contact that person with your family status. Then each of your family and friends know who to contact for information regarding your welfare following the disaster.

Make a promise to yourself to look for ways to improve your personal preparedness. Every small step will help you to recover from a disaster.

## Household Chemical Wastes --

# When and Where to Safety Dispose of Them

**W**ondering what to do with those old lawn and garden chemicals, paint, and household cleaners you discovered while spring cleaning the basement and garage? There are several upcoming close-to-home opportunities to properly dispose of those items that should be kept out of the landfills.

To determine if something is a household chemical waste, look for the words "danger," "toxic," "flammable," "corrosive," and/or "reactive" somewhere on the product's packaging. Disposing of these wastes can be a challenge, as personal and environmental damage can occur if they are disposed of in the trash, poured down the drain or dumped on the ground. The Illinois Environmental Protection Agency (IEPA) sponsors one day collections statewide for proper disposal of such wastes.

Proper disposal of these wastes can be a challenge. Household hazardous waste should never be poured down the drain, dumped onto the ground or into storm sewers. Household hazardous wastes also should not be thrown out with your household garbage. The Illinois Environmental Protection Agency sponsors one-day and long-term collections statewide to encourage proper disposal of such household wastes. All Illinois residents are eligible to participate.

The following lists the Spring 2009 Household Chemical Waste Collection Schedule for the surrounding area:

**May 9, 2009**

**Elk Grove Village**

8:00 a.m. to 3:00 p.m.

Elk Grove Pavilion

1000 Wellington Avenue

**June 6, 2009**

**Bartlett**

8:00 a.m.-3:00 p.m.

Hanover Township

250 S. Route 59

### Acceptable Wastes at One-Day Collections

Oil-based paints	paint thinners	herbicides
insecticides	pesticides	old gasoline
pool chemicals	mercury	solvents
used motor oil	drain cleaners	fluorescent lamp bulbs
antifreeze	aerosol paints	household batteries
hobby chemicals	cleaning products	lawn chemicals

### Unacceptable Wastes at One-Day Collections

Latex paint	explosives	fireworks	medical wastes
smoke detectors	lead acid batteries	propane tanks	fire extinguishers
agricultural chemicals and business wastes			

If you have questions, call the IEPA's Waste Reduction Unit at (217) 785-8604 or visit [www.epa.state.il.us](http://www.epa.state.il.us). For additional information contact the Environmental Health Division at (847) 359-9090.

Village  
of Palatine

N E W S L E T T E R

The Village of Palatine  
200 E. Wood Street,  
Palatine, Illinois 60067  
Village Hall: (847) 358-7500  
Village Action Line : (847) 705-5200  
E-mail: [village@palatine.il.us](mailto:village@palatine.il.us)  
Home page: [www.palatine.il.us](http://www.palatine.il.us)

**Jim Schwantz, Mayor**  
(847) 359-9007; [jschwantz@palatine.il.us](mailto:jschwantz@palatine.il.us)  
**Margaret R. Duer, Village Clerk**  
(847) 359-9051; [mduer@palatine.il.us](mailto:mduer@palatine.il.us)

**Aaron Del Mar, District 1**  
(847) 894-0001; [adelmar@palatine.il.us](mailto:adelmar@palatine.il.us)  
**Scott Lamerand, District 2**  
(847) 894-0002; [slamerand@palatine.il.us](mailto:slamerand@palatine.il.us)  
**Daniel A. Varroney, District 3**  
(847) 359-6479; [dvarroney@palatine.il.us](mailto:dvarroney@palatine.il.us)  
**Greg Solberg, District 4**  
(847) 358-0531; [gsolberg@palatine.il.us](mailto:gsolberg@palatine.il.us)  
**Jack Wagner, District 5**  
(847) 358-3766; [jwagner@palatine.il.us](mailto:jwagner@palatine.il.us)  
**Brad Helms, District 6**  
(847) 894-0006; [bhelms@palatine.il.us](mailto:bhelms@palatine.il.us)

**Reid Ottesen, Village Manager**  
(847) 359-9031; [rottesen@palatine.il.us](mailto:rottesen@palatine.il.us)  
Kaye Lowman Boorum, Newsletter Editor

Presorted  
Standard  
U.S. Postage  
**PAID**  
Permit No. 2855  
Palatine Illinois

\*\*\*\*\*ECRWSS\*\*

POSTAL CUSTOMER  
Palatine, Illinois